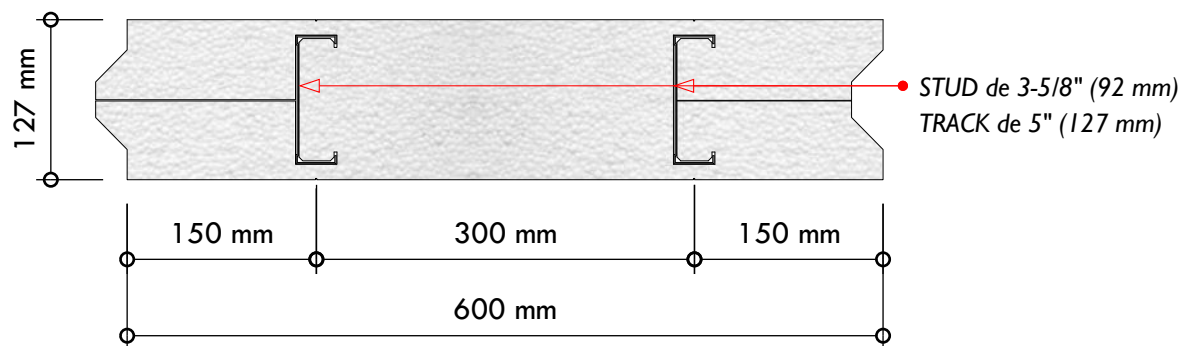
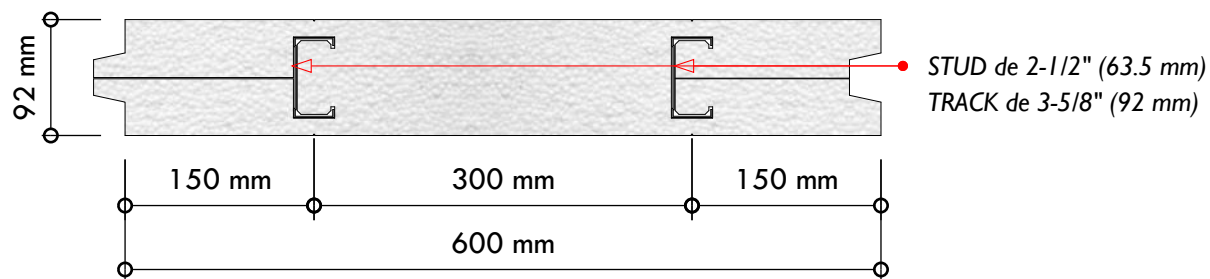


LITEWALL 130



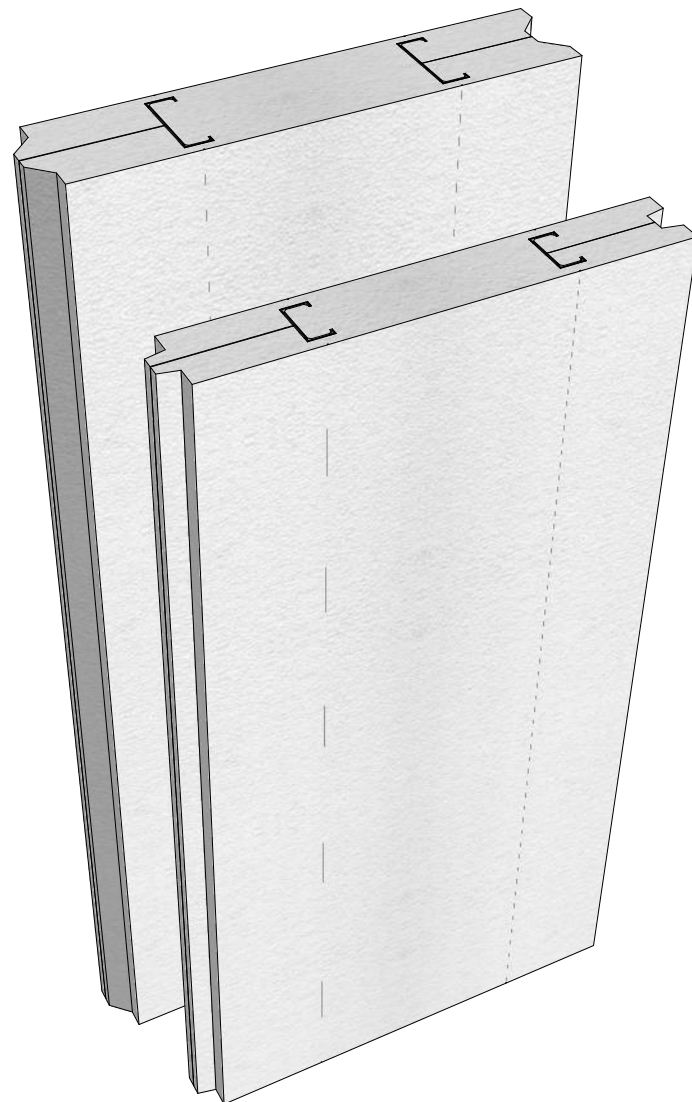
LITEWALL 90



Material Aislante: Núcleo de EPS densidad 15 y 20 kg/m³, poliestireno auto-extinguible Tipo F de acuerdo a las normas ASTM-E84 Class A (test for surface burning characteristics of building materials)

Material STUD Y TRACK: Acero galvanizado según ASTM A653/A653M, acero Grado Comercial (CS) tipo A/B.

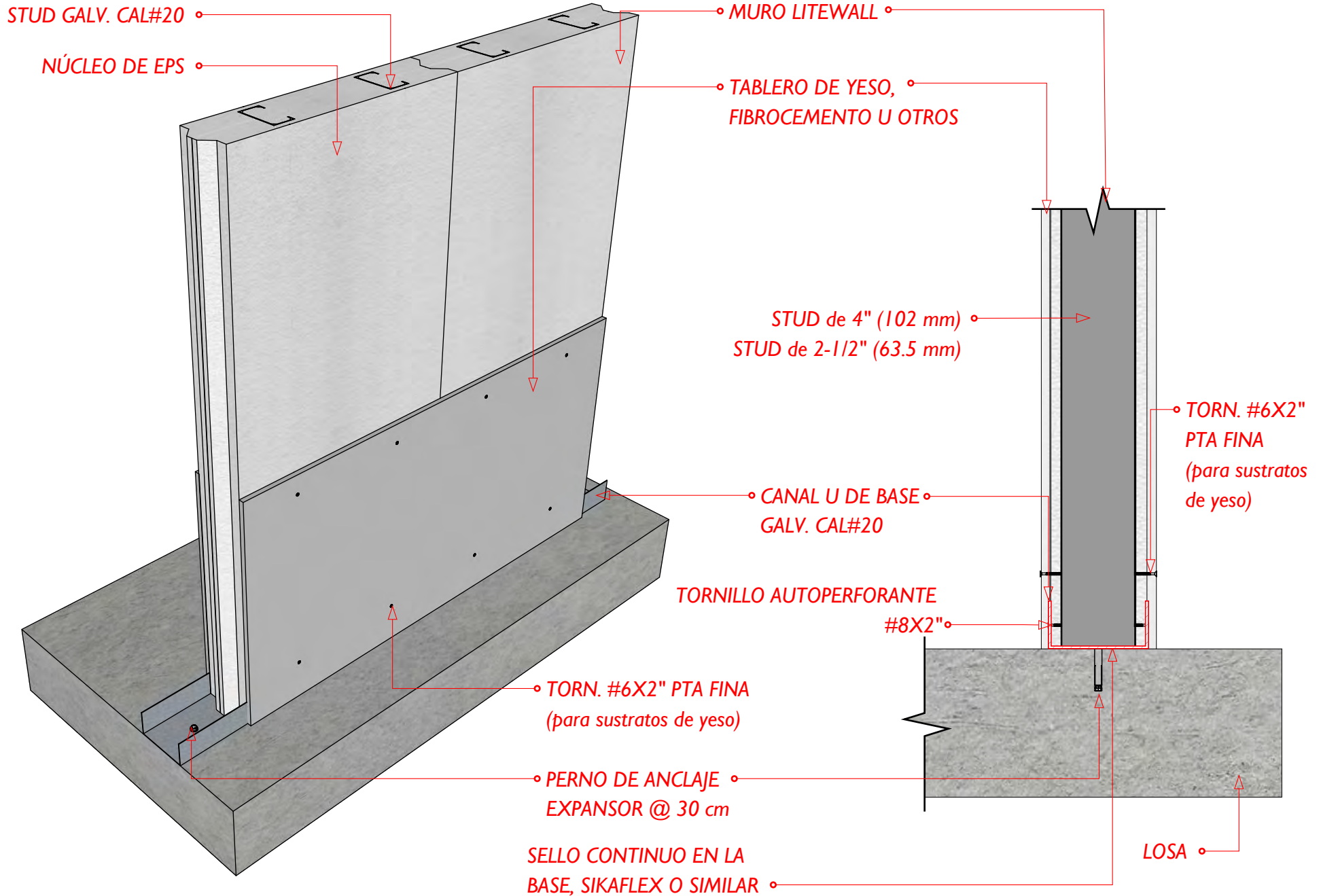
Capa de zinc: Z180 (180 gr/m²), Equivalente a G60.



2

DETALLE DE ANCLAJE INFERIOR

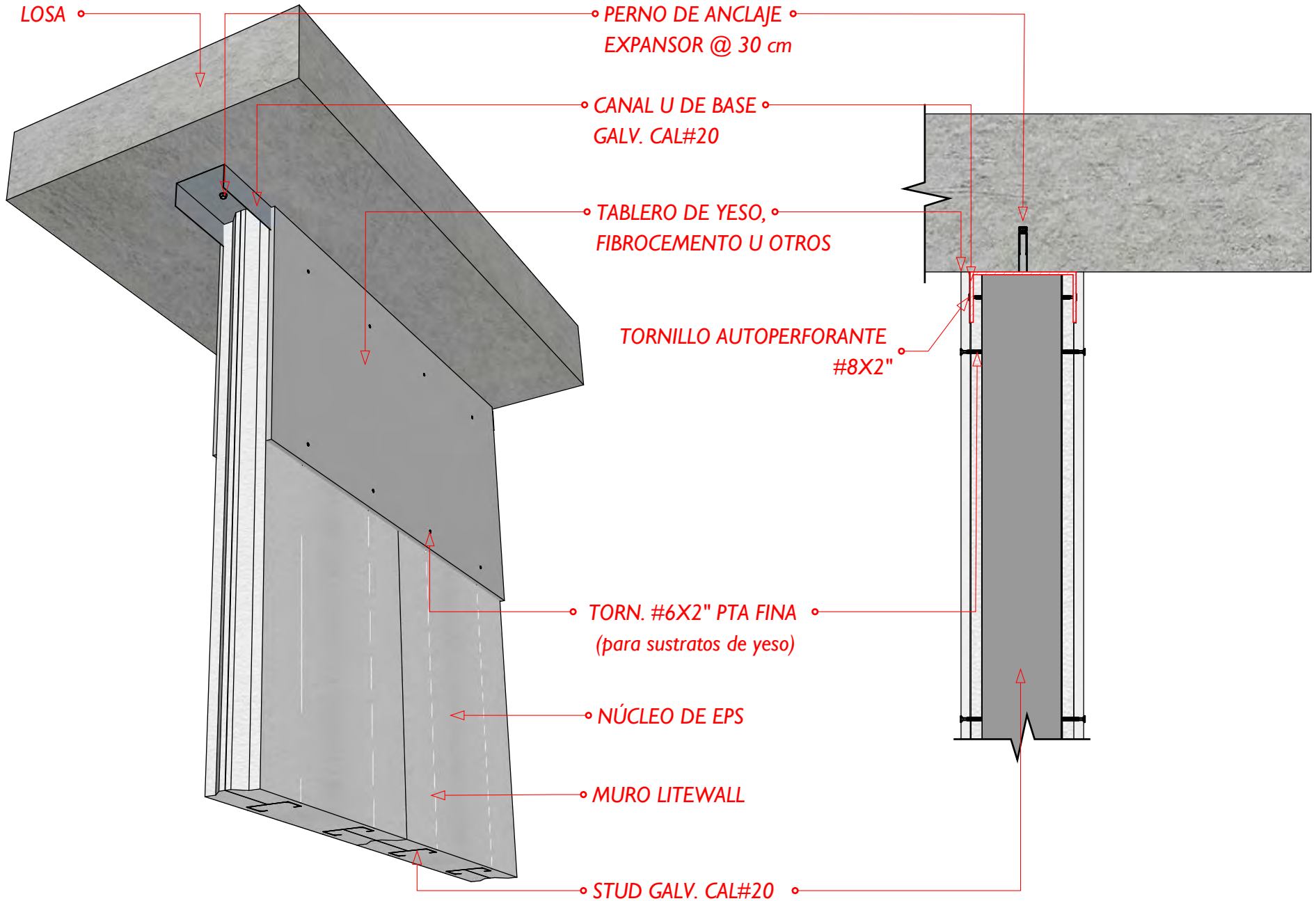
LITEWALL



3

DETALLE DE ANCLAJE SUPERIOR

LITEWALL



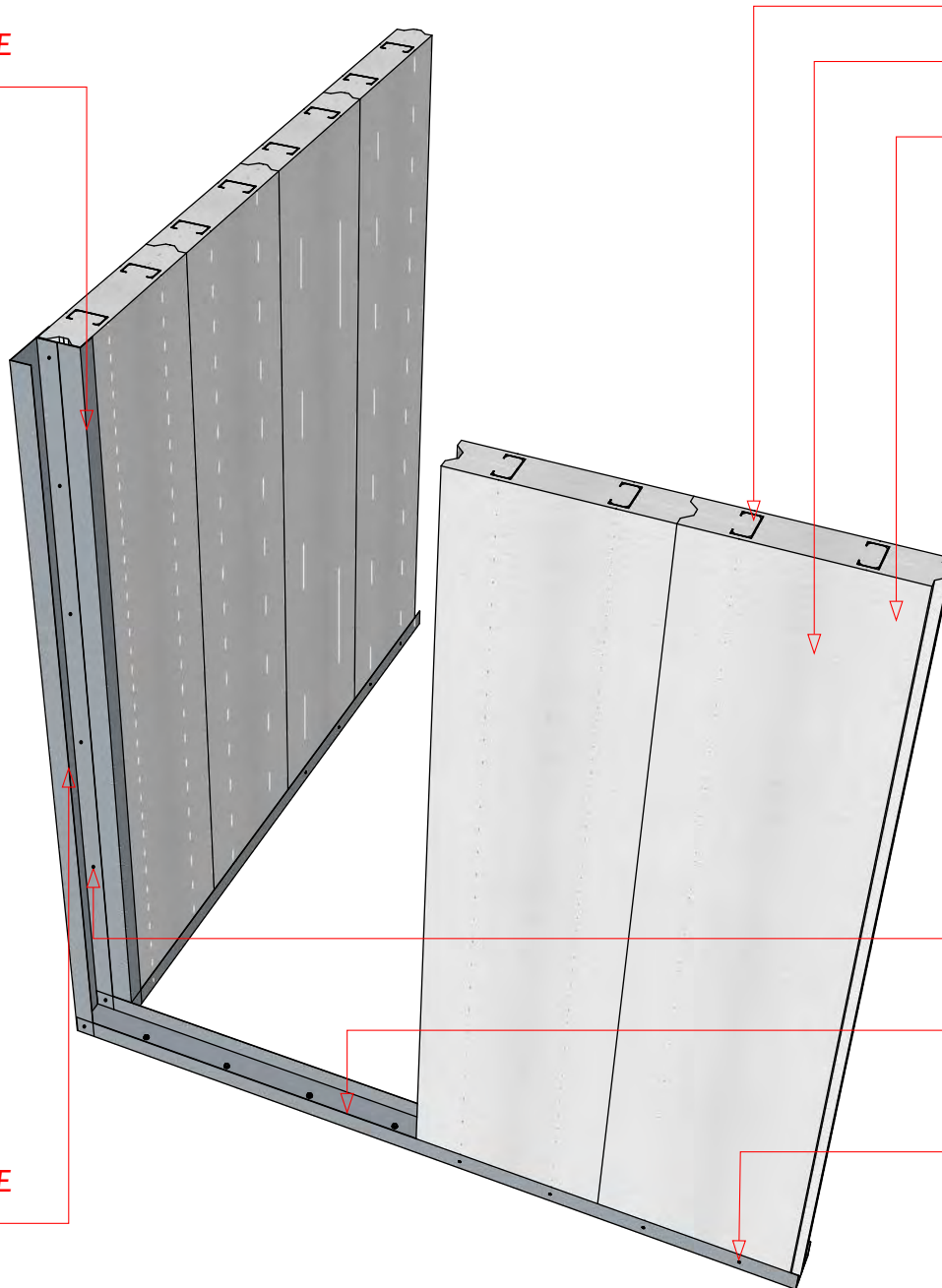
4

DETALLE DE UNION EN ESQUINAS

LITEWALL

CANAL U DE BASE
GALV. CAL#20

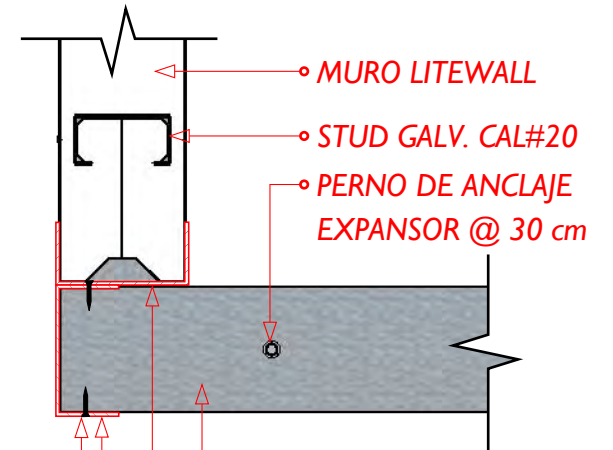
CANAL U DE BASE
GALV. CAL#20



◦ STUD GALV. CAL#20

◦ MURO LITEWALL

◦ NÚCLEO DE EPS



◦ MURO LITEWALL

◦ STUD GALV. CAL#20

◦ PERNO DE ANCLAJE
EXPANSOR @ 30 cm

◦ CANAL U DE BASE
GALV. CAL#20

◦ TORNILLO AUTOPERFORANTE
N°8 x 1"

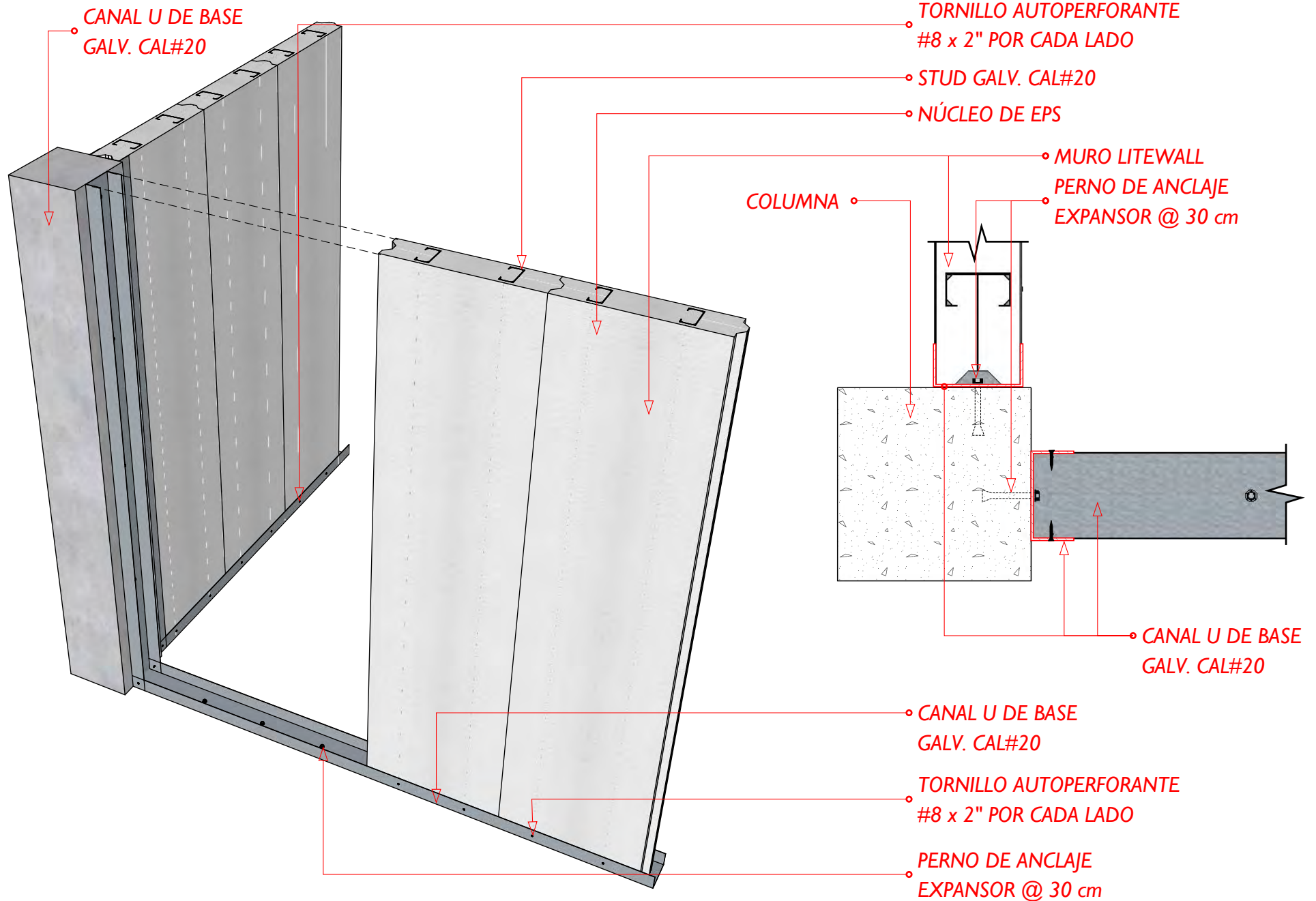
◦ CANAL U DE BASE
GALV. CAL#20

◦ TORNILLO AUTOPERFORANTE
#8 x 2" POR CADA LADO

5

DETALLE DE UNION EN COLUMNAS

LITEWALL

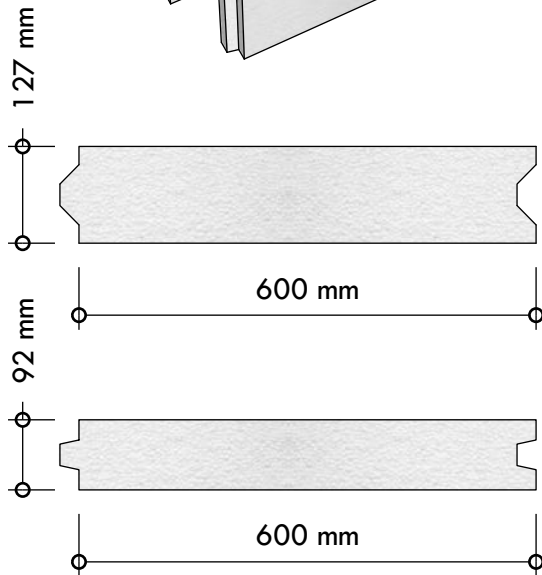


UTILIZAR COMO RELLENO EN
ESPACIOS MENORES A 600 mm



CANAL U DE BASE
GALV. CAL#20

RELLENOS EPS LITEWALL
PARA LT90 Y LT130

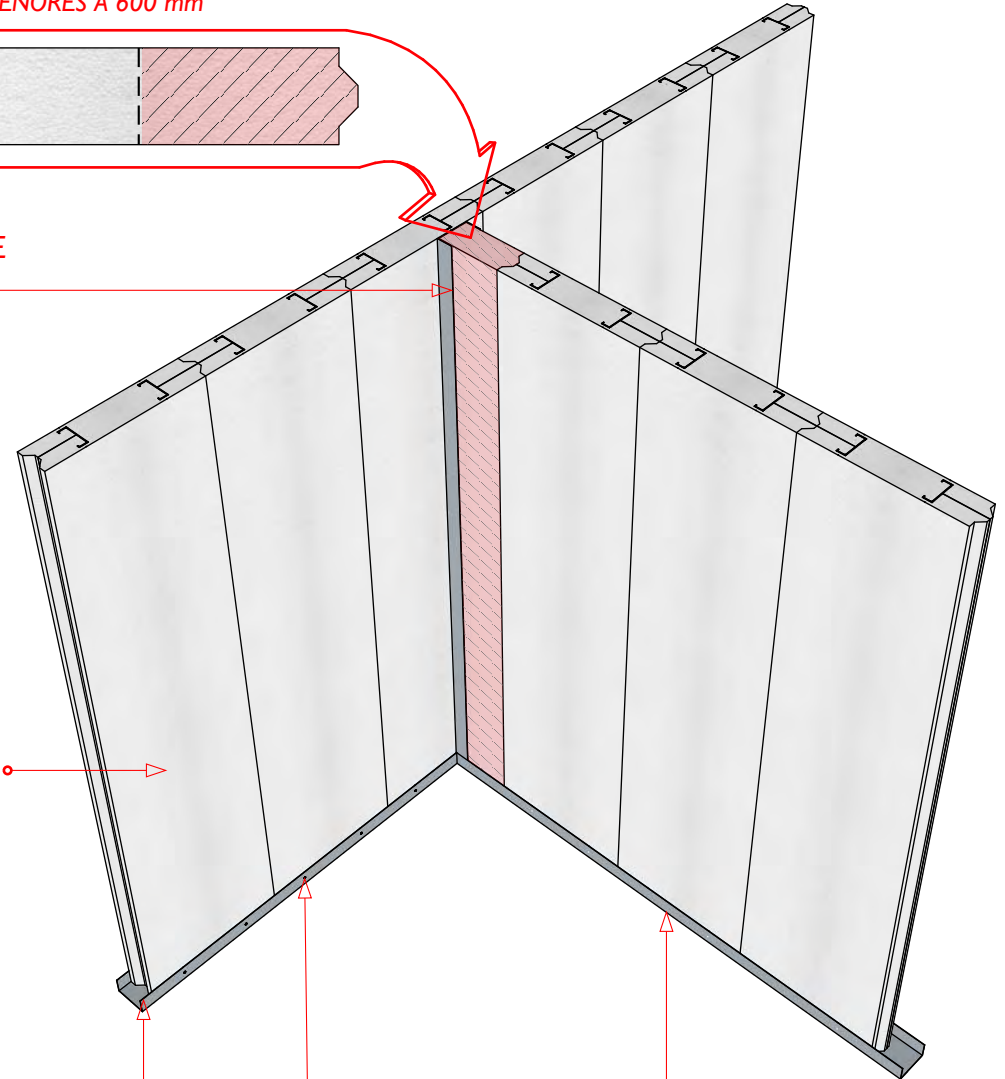


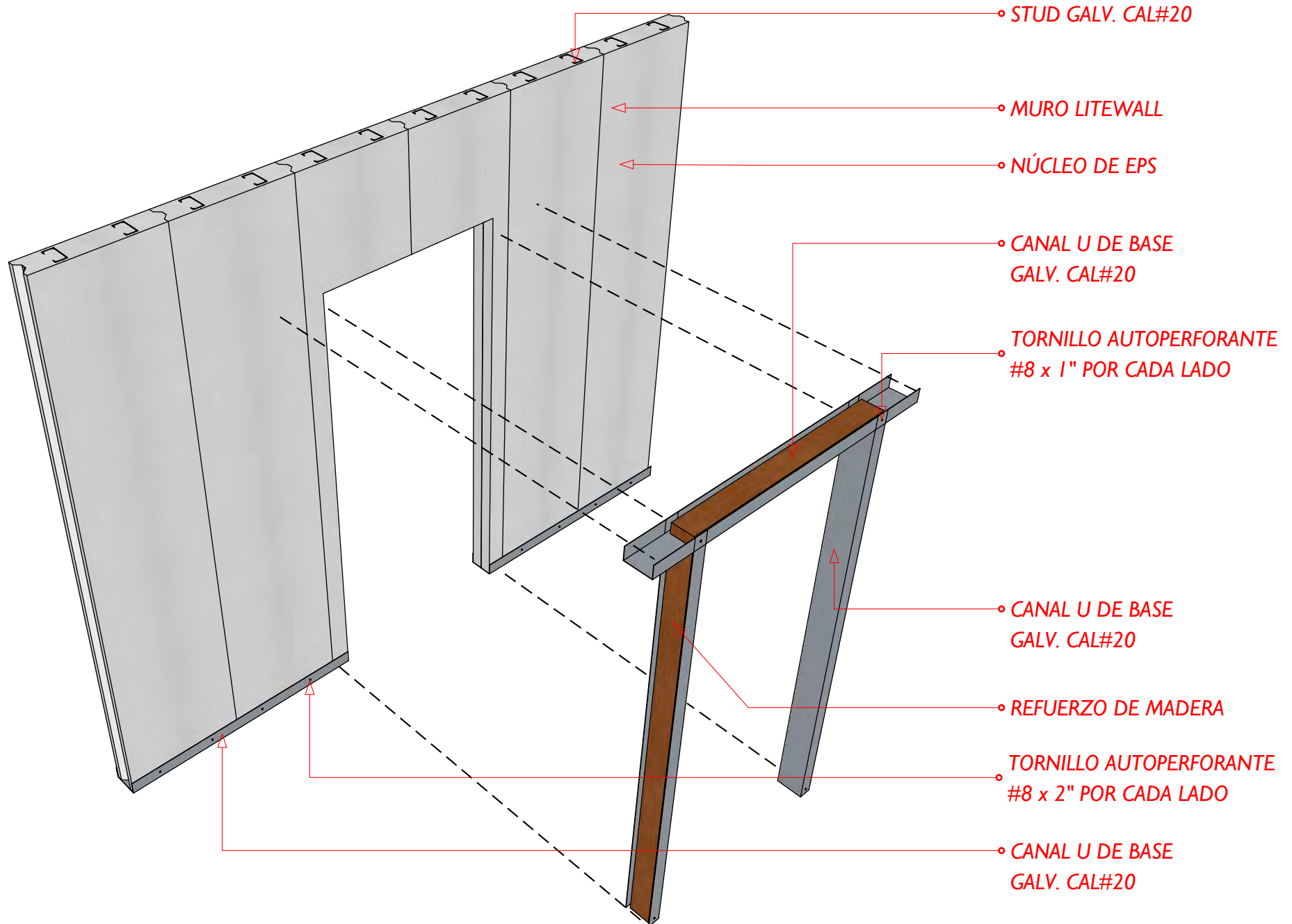
MURO LITEWALL

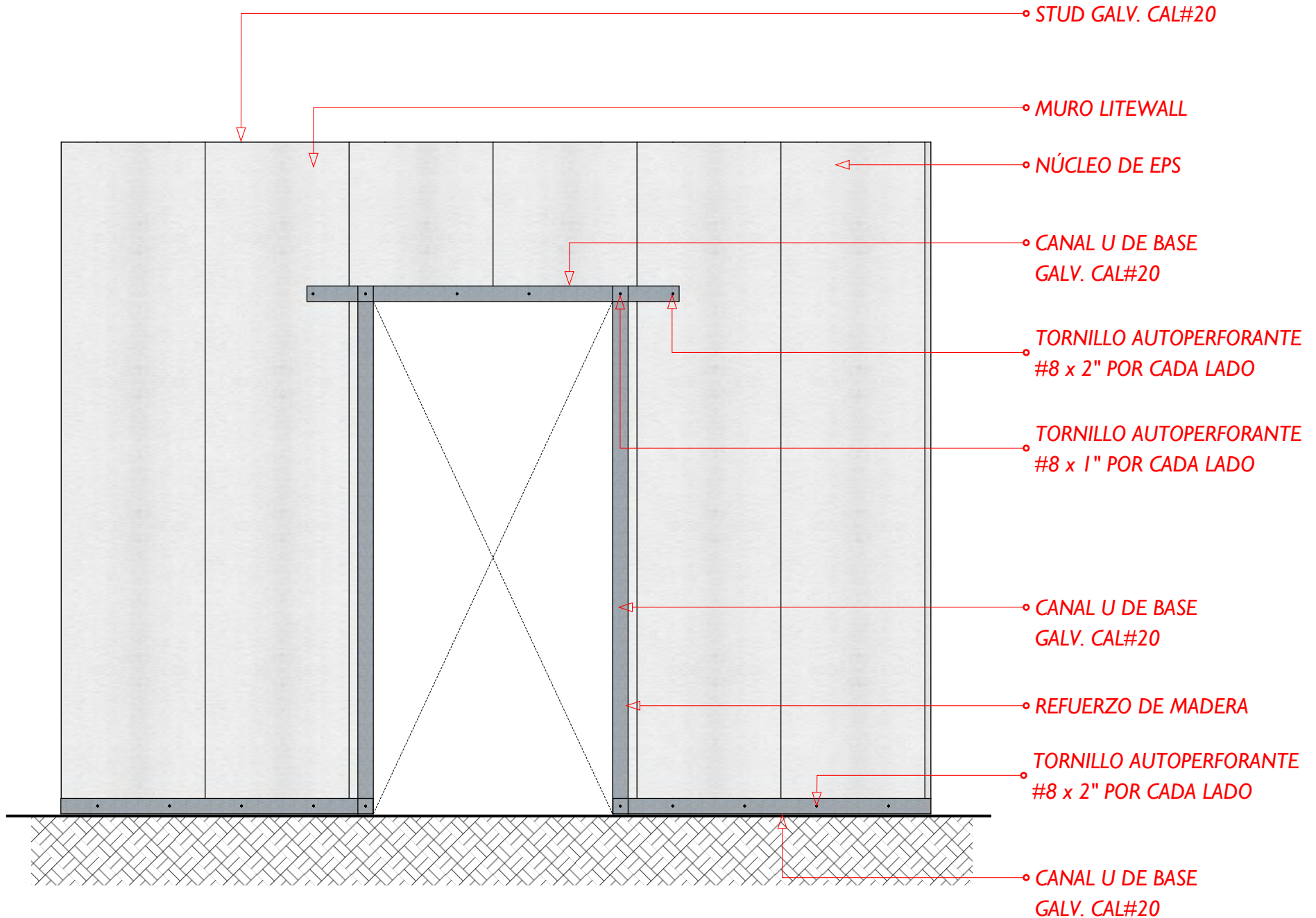
CANAL U DE BASE
GALV. CAL#20

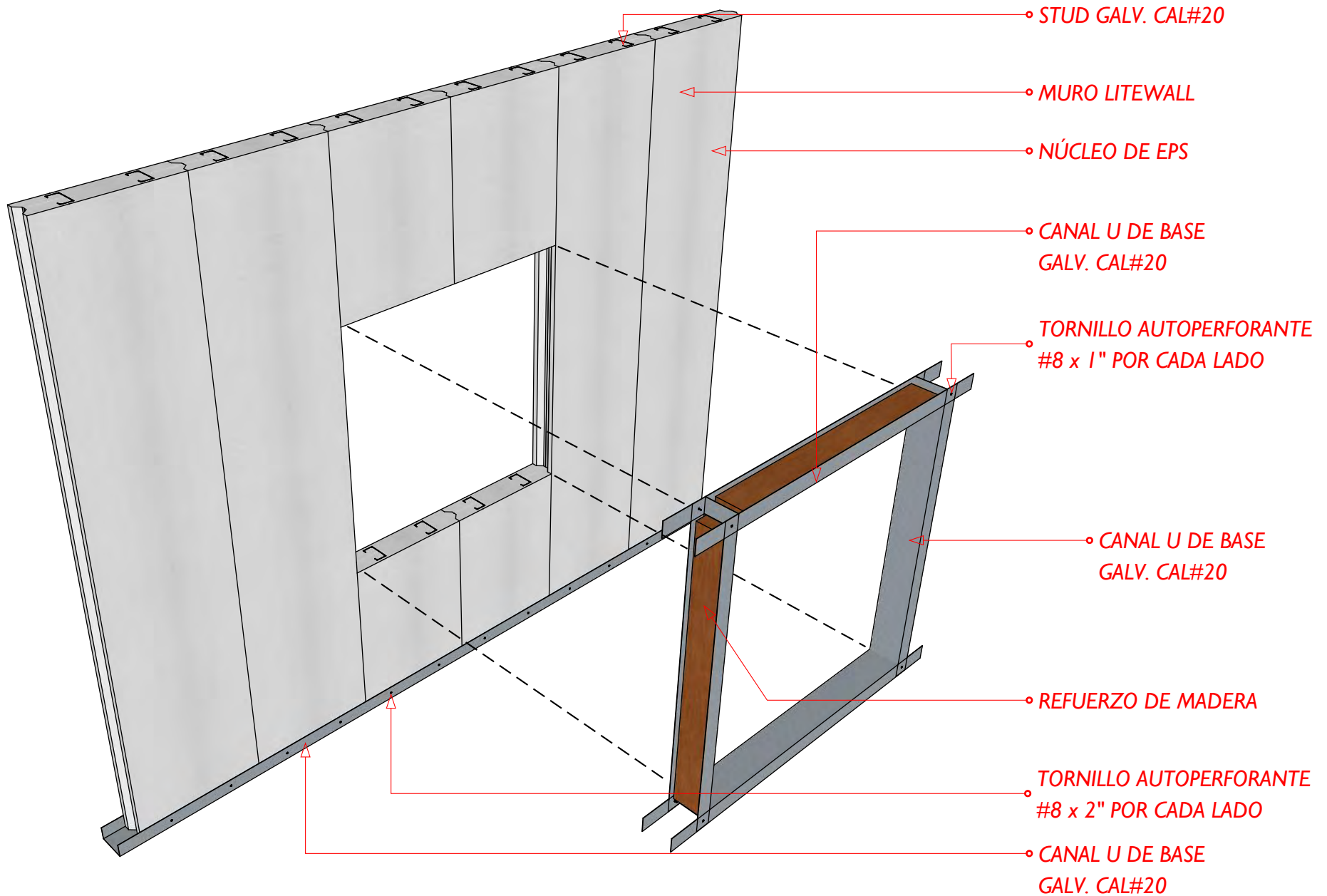
TORNILLO AUTOPERFORANTE
#8 x 2" POR CADA LADO

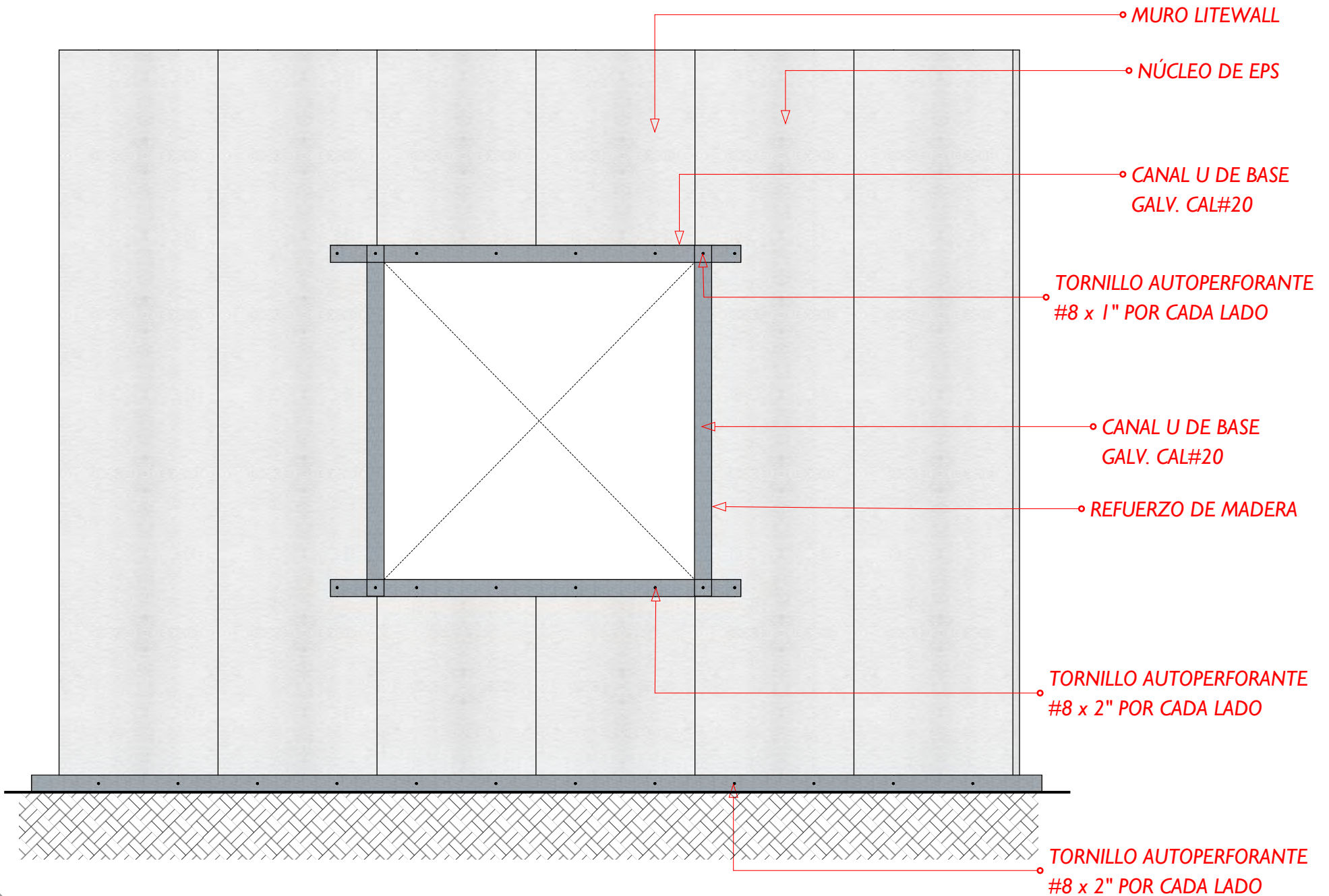
CANAL U DE BASE
GALV. CAL#20

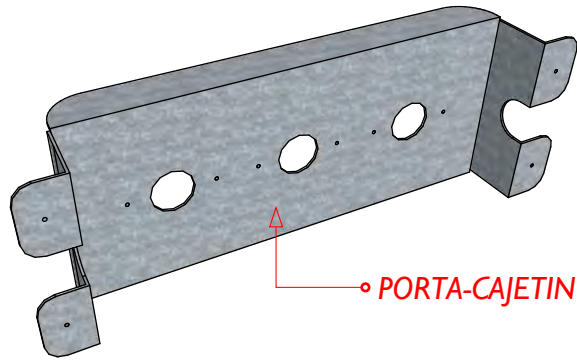




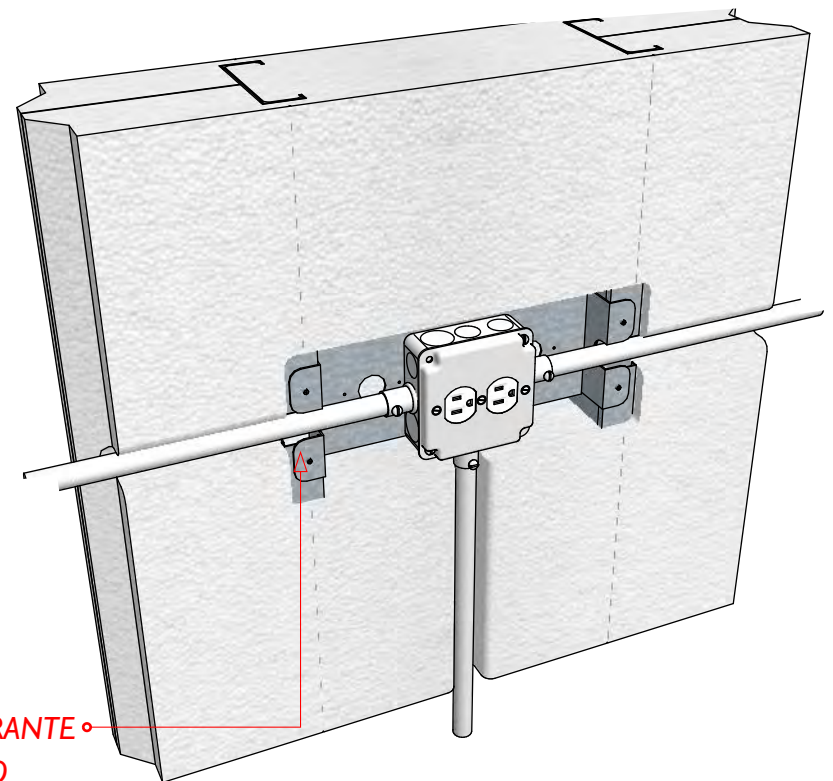
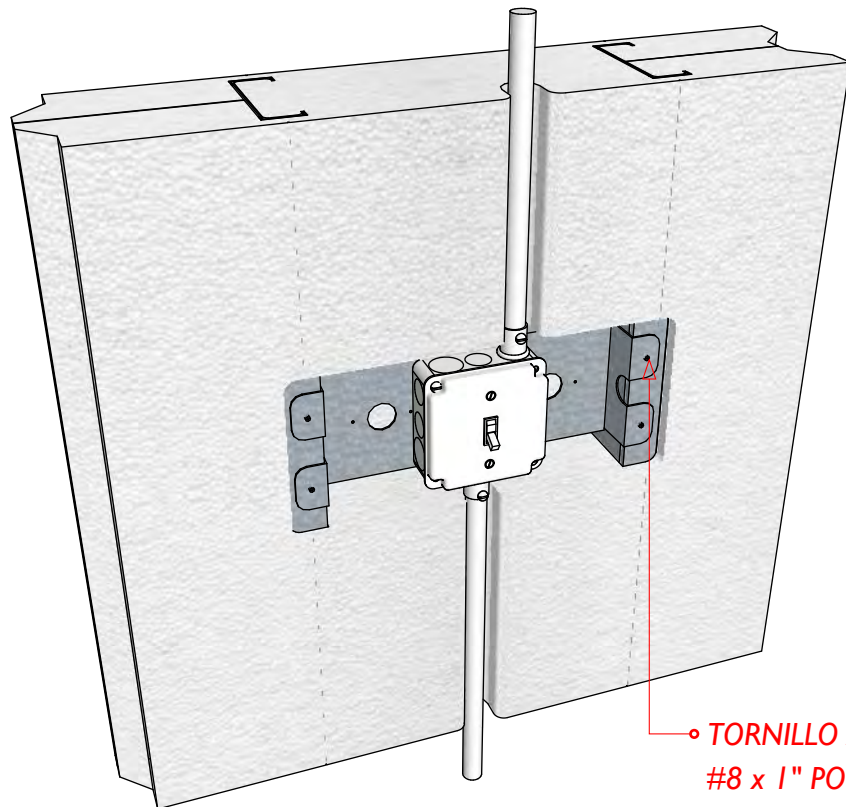
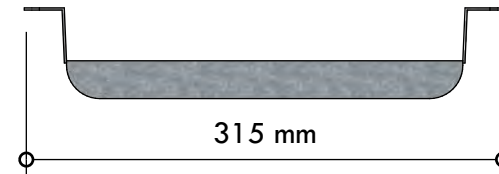
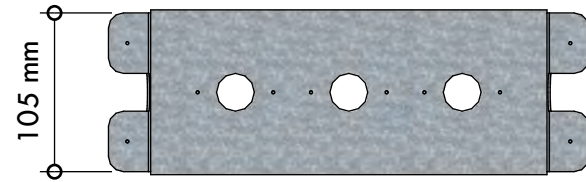




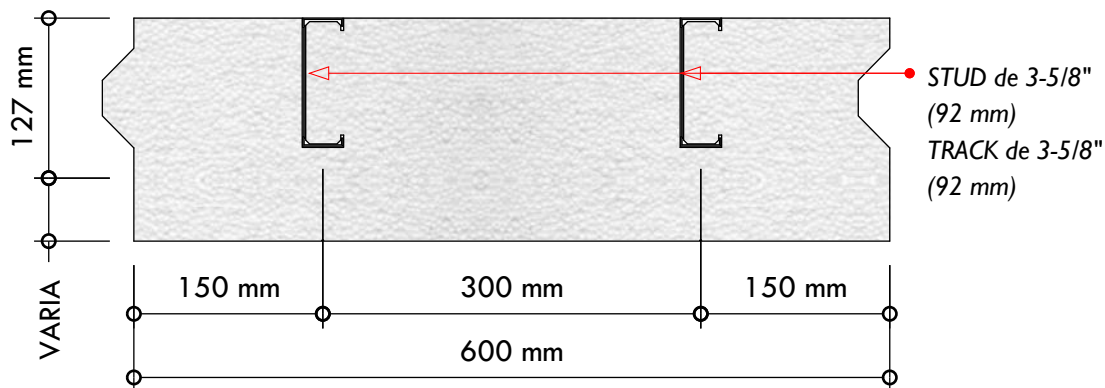




◦ PORTA-CAJETIN LITEWALL

◦ TORNILLO AUTOPERFORANTE ◦
#8 x 1" POR CADA LADO

LITEWALL PARA FACHADAS EIFS

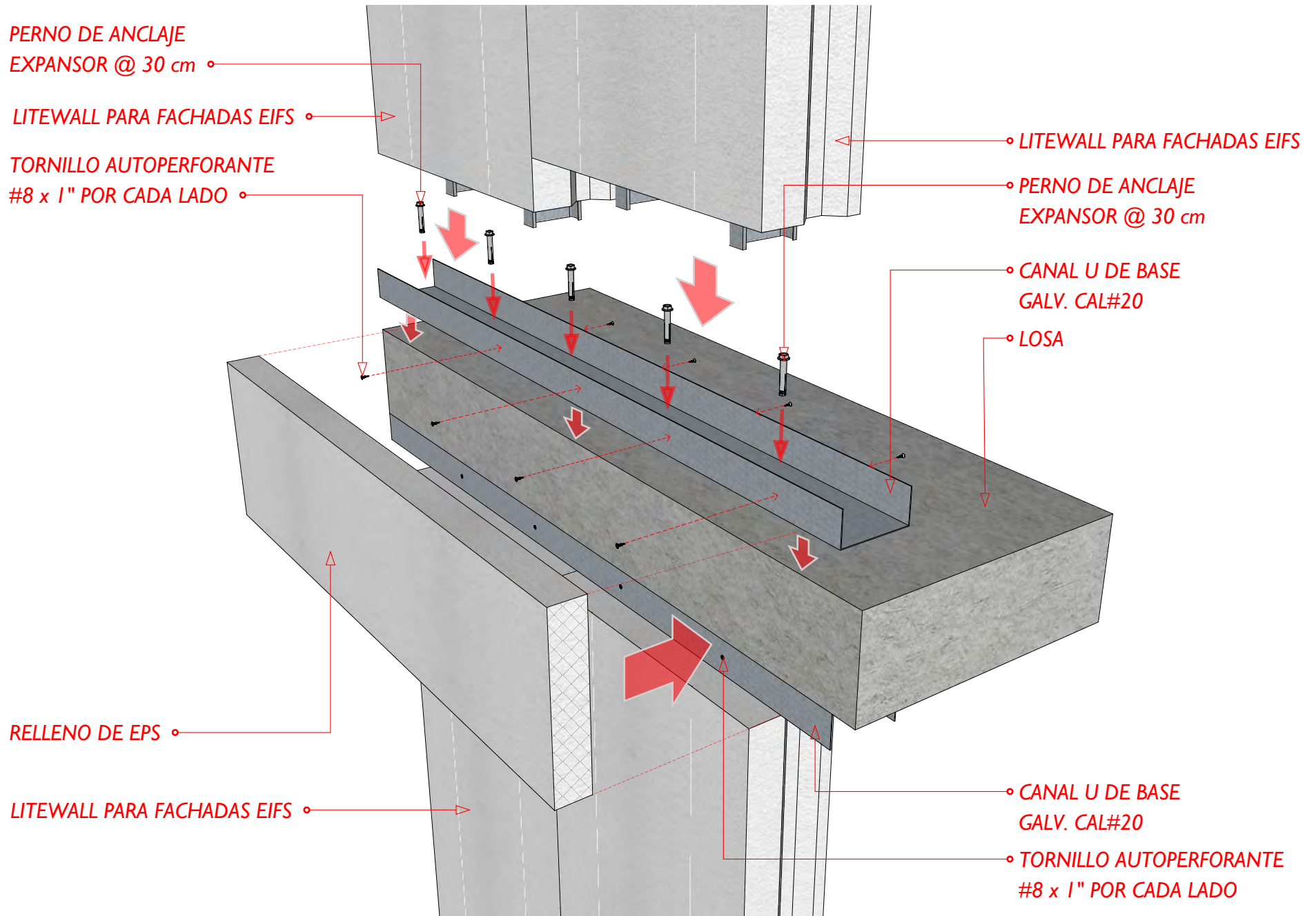


Material Aislante: Núcleo de EPS densidad 15 y 20 kg/m³, poliestireno auto-extinguible Tipo F de acuerdo a las normas ASTM-E84 Class A (test for surface burning characteristics of building materials)

Material STUD Y TRACK: Acero galvanizado según ASTM A653/A653M, acero Grado Comercial (CS) tipo A/B.

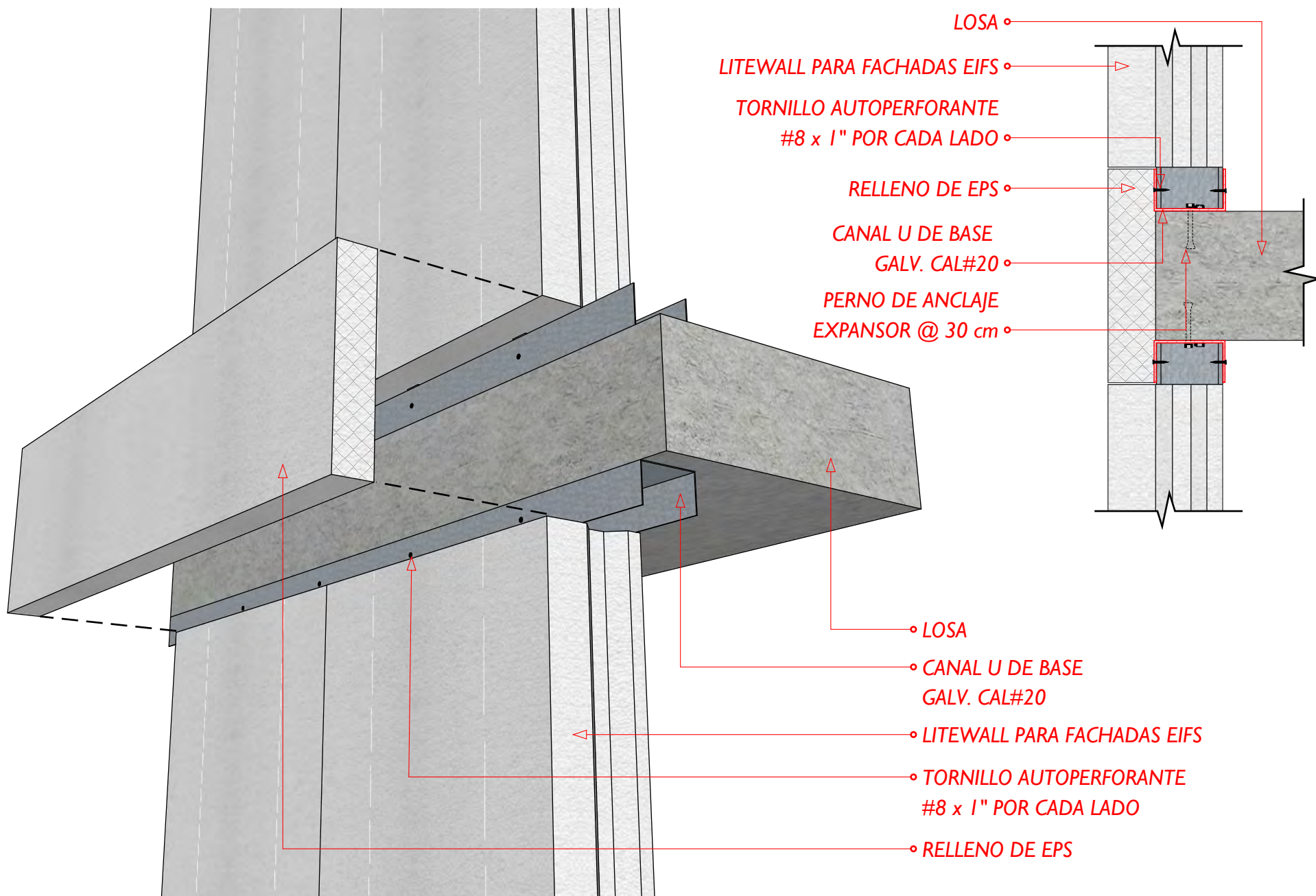
Capa de zinc: Z180 (180 gr/m²), Equivalente a G60.





1 4 DETALLE GENERAL PARA INSTALACION DE SISTEMAS EIFS

LITEWALL



15 DETALLE GENERAL PARA INSTALACION DE SISTEMAS EIFS

LITEWALL

